



Office of the State Controller

Checking the SAP GUI 770 Installation

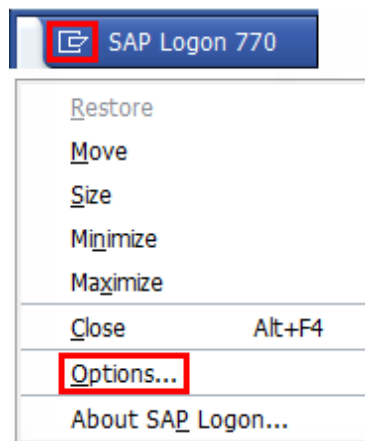
1. Option A: Click on the SAP Logon  button on your toolbar or desktop.



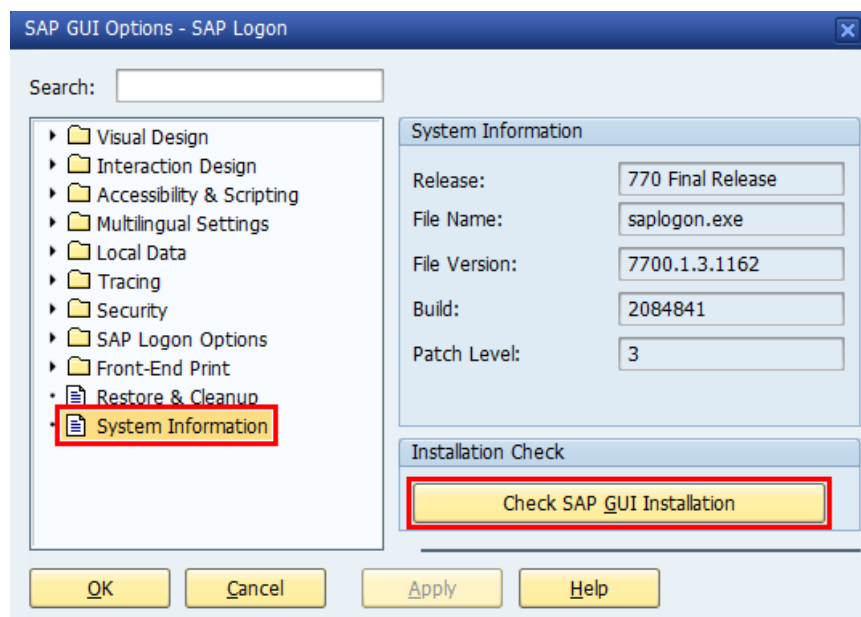
Option B: Start Menu and search for SAP logon.

Option C: Start Menu > All Programs > SAP Front End > SAP Logon.

2. Click on the top left-corner of the SAP Logon 770 screen and Select **“Options.”**

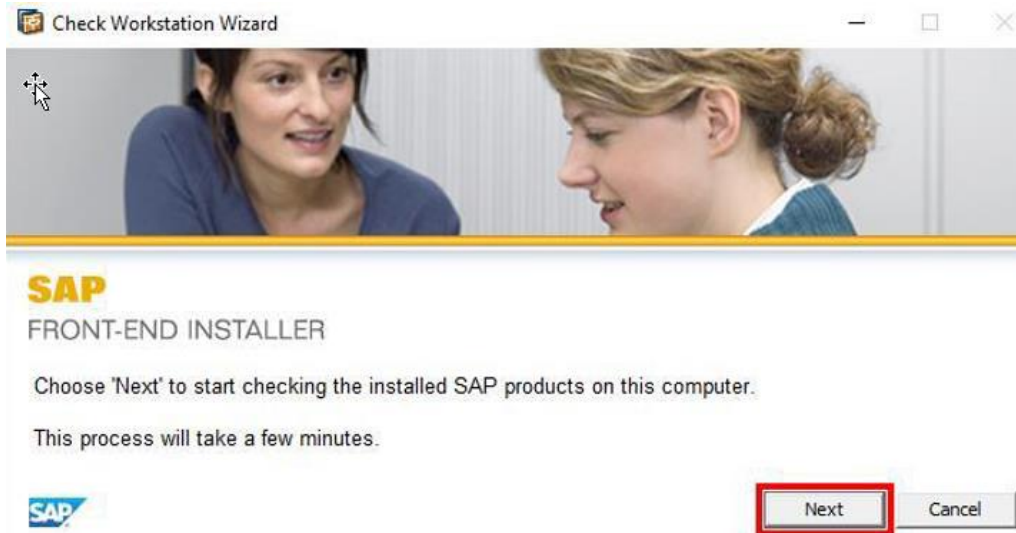


3. Select **“System Information”** and then click **“Check SAP GUI Installation.”**

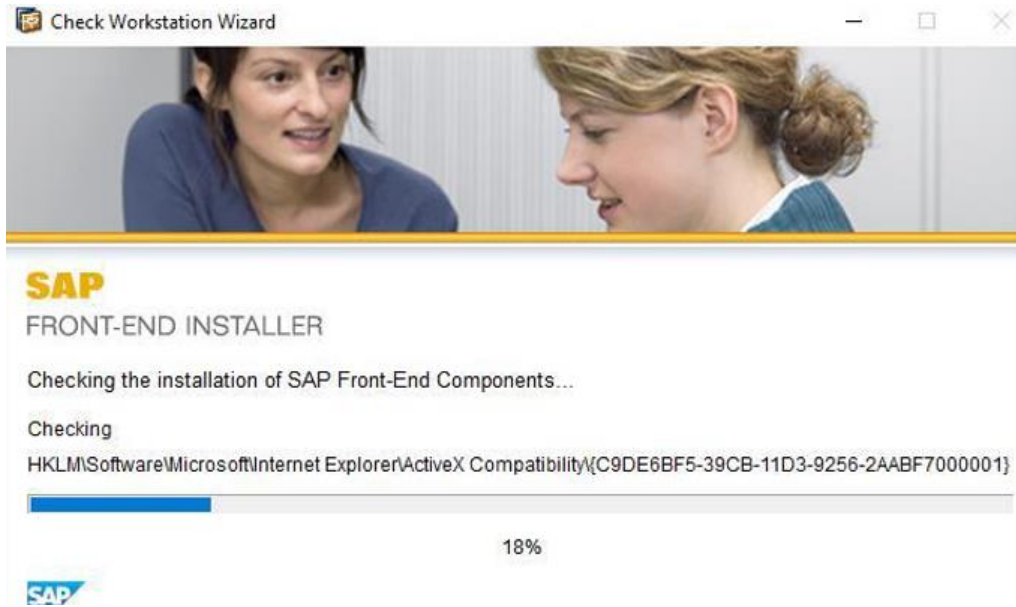




4. Click "Next."

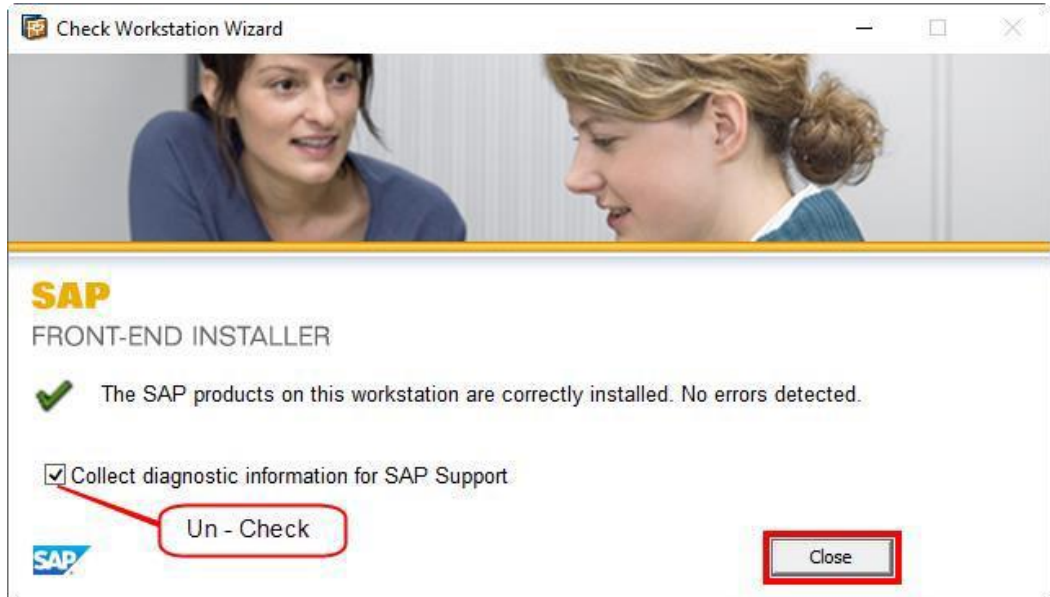


5. Wait for the Check SAP GUI Installation to finish.





6. Uncheck the box "Collect diagnostic for SAP Support and **Close** when complete.



***If the Check said you are missing any files, you will need to uninstall and reinstall SAP GUI.