



BOBJ SP6P5 New Features and Known Issues

New Features

Feature	Tool Impacted	Description
Manual Entry on Prompts	Webi and Crystal Reports	Most of the prompts will now allow direct entry rather than requiring drop down selection. There are some exceptions to this depending on how the prompt was defined. Also, selection is still required for the Orgunit Hierarchy prompt.
OK button for Input Control checkbox	Webi	When using a checkbox based input control that allows multiple value selection, a new OK button has been added to indicate when the filter is ready to be applied. Previously this type of input control would dynamically filter the report each time a new checkbox was selected.
Sample Image display for different chart types	Webi	This is useful when trying to add a chart to Webi. A sample image is displayed to provide a visual aid for choosing the correct chart type
BI Variants	Webi	You can now create variants to fill the prompts of a Webi report. There are some limitations with this. First, it does not support manual entry in the prompts, second, the prompt variant does not get saved with a new copy of the report. If you save a copy of the report in your personal folder you will need to create a new variant for it. It should prove helpful to folks who are running the same report over and over.
Multi Column Selection	Webi	Now we can format multiple columns at the same time, by selecting multiple columns and applying the desired formatting.
Selection of Null Values	Webi	Blank or Null values will now show up in the drop down list and can be selected for filtering. Previously, filtering on null values required a formula
Dash Lines Options in Webi Charts	Webi	Line formatting options have been added to Webi charts. Previously, it defaulted to a solid line and there were no options to change the line style.
Document Input Controls	Webi	Input controls can now be applied to the entire document, not just a single report. This is helpful where there are multiple reports that need to be filtered in a single document.

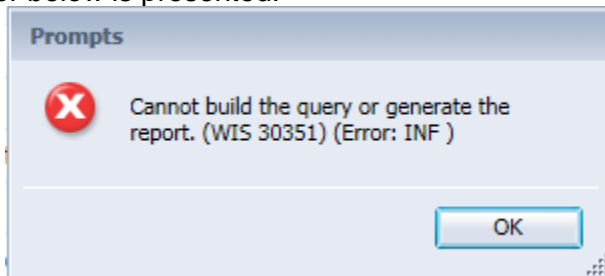


BOBJ SP6P5 New Features and Known Issues

Known Issues

Webi

1. In some cases, after a report has been modified, the first time a refresh is performed the error below is presented.

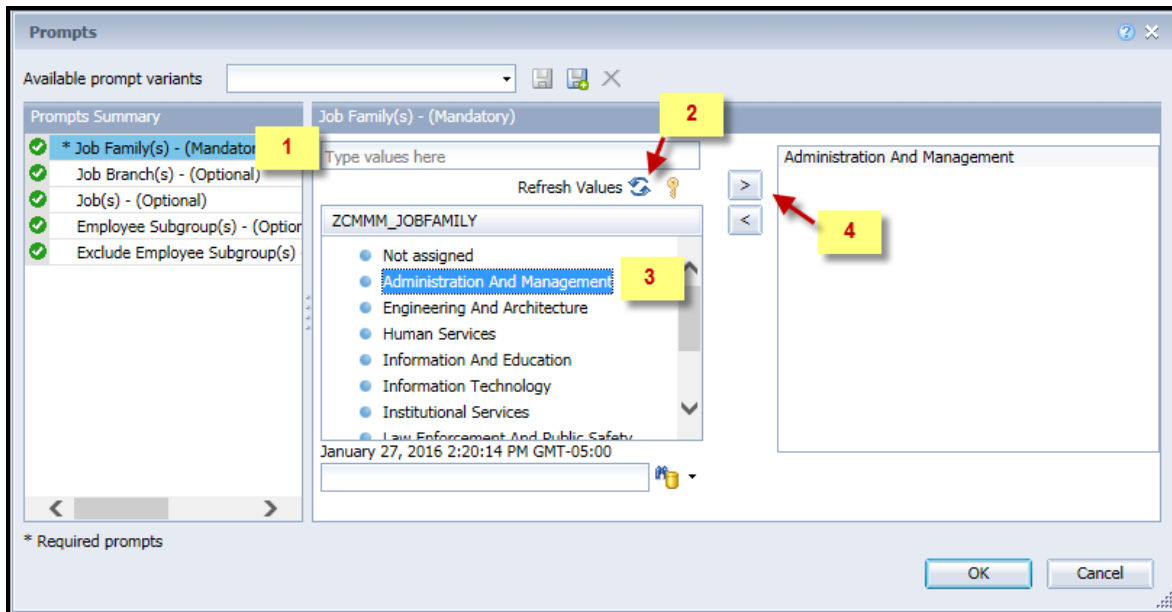


To refresh the report, click ok and then refresh a second time and report will display correctly. We are working with SAP to identify a solution.



BOBJ SP6P5 New Features and Known Issues

2. As mentioned under the new features, variants can now be created to fill the prompts in a Webi report. The prompt variant does not get saved with a new copy of the report, so after you save a copy of the report in your personal folder, you will need to create a new variant for it. These are the steps you will need to take to create a variant. The B0165-1: Job Attributes prompt screens will be used in this example. First, run the report and save it under your personal folder. Then click on the report in your personal folder to run the report. Once the prompt screen is displayed:
- Select the prompt desired (1);
 - Refresh values (2);
 - Select the value desired (3);
 - Click on the right arrow button to add to the selected values box (4).

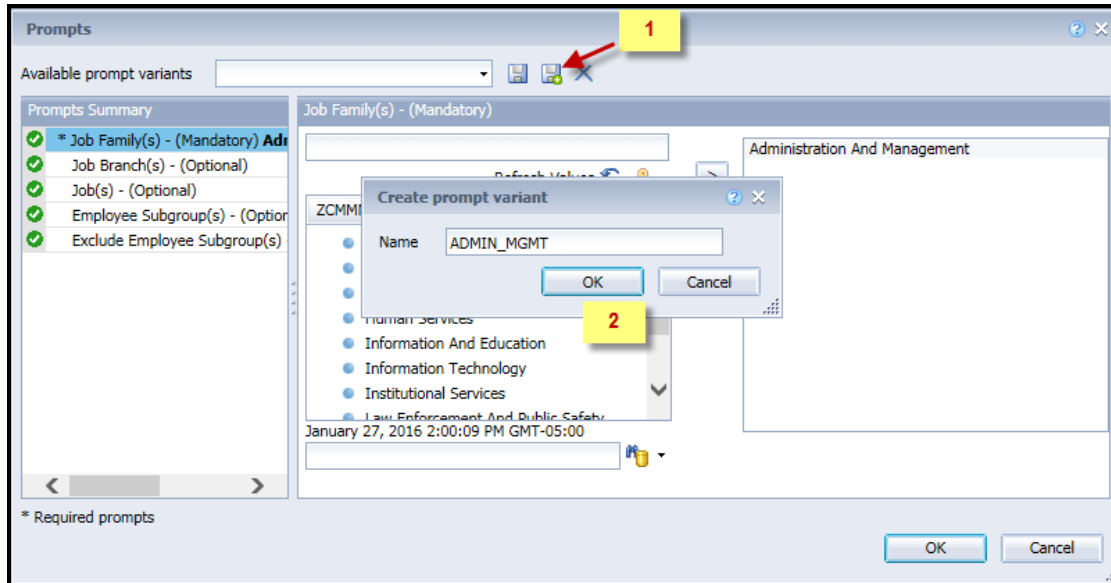




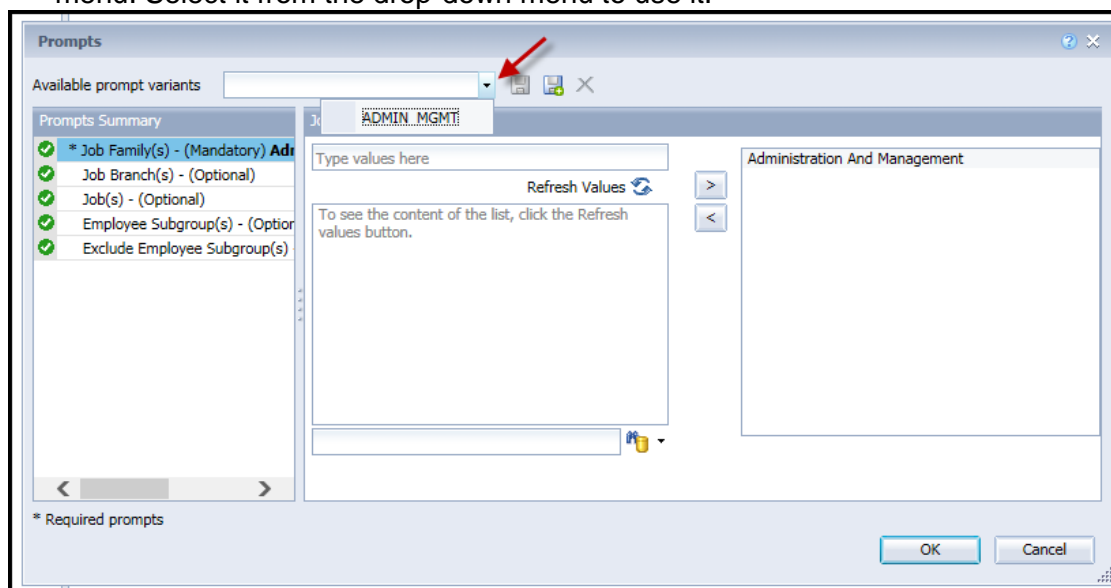
BOBJ SP6P5 New Features and Known Issues

Then create the prompt variant:

- Click on the “Create Prompt Variant” icon (1);
- Enter the desired name of the variant, and click “OK” (2).



- Generate the report, and then save it. The next time you run the report from your personal folder, you can see any saved prompt variants by clicking on the drop-down menu. Select it from the drop-down menu to use it.





BOBJ SP6P5 New Features and Known Issues

- The text search is no longer available for some of the prompts because they are defined as keys in BOBJ. Employee(s) PersNo. is one of these known affected prompts. The following is an example of the issue. The B0036: Employee Asset report is used for this example. The text search for “Jones*” for the Employee(s) PersNo. returns no values for the State of North Carolina:

The screenshot shows the 'Prompts' dialog box with the following details:

- Available prompt variants:** A dropdown menu.
- Prompts Summary:** A list of prompts with checkmarks: * Organizational Unit State of No, Employee(s) PersNo. - (Optional), Object(s) on Loan - (Optional), Date Received (Single Value, Op, Date to be Returned (Single Val.
- Employee(s) PersNo. - (Optional) (optional):** A search field containing 'Employee'. Below it, a date stamp reads 'January 27, 2016 3:11:47 PM GMT-05:00'. The search input field contains 'Jones*'.
- Search Results:** An empty list box.
- Bottom:** A note '* Required prompts'.

The number search still returns a list of values. In this example, a search on “123*” returns a list of values:

The screenshot shows the 'Prompts' dialog box with the following details:

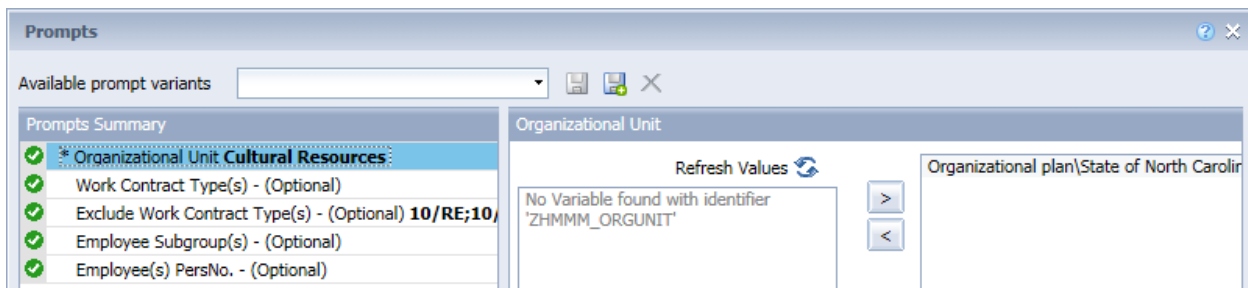
- Available prompt variants:** A dropdown menu.
- Prompts Summary:** A list of prompts with checkmarks: * Organizational Unit State of No, Employee(s) PersNo. - (Optional), Object(s) on Loan - (Optional), Date Received (Single Value, Op, Date to be Returned (Single Val.
- Employee(s) PersNo. - (Optional) (optional):** A search field containing 'Employee'. Below it, a date stamp reads 'January 27, 2016 3:12:21 PM GMT-05:00'. The search input field contains '123*'. A dropdown menu shows '12323...1239855'.
- Search Results:** A list of employee IDs: 12323, 12333, 123015, 123076, 123148, 123194, 123203, 123209, 123219, 123266.
- Bottom:** 'OK' and 'Cancel' buttons.



BOBJ SP6P5 New Features and Known Issues

There is not a known fix for this issue, although we are continuing to research for a fix, and are investigating workaround options.

4. There is a known issue with the B0086: Supplemental Staff Estimated Assignment End Date report under the PA: Temporary Employees folder. The report will execute on the first attempt after you enter your prompts. However, if you attempt to add an available object to the report, or attempt to refresh the report, the report produces errors, and you will not be able to re-execute the report. The BI team is working on a solution or a workaround for this problem. We apologize for the inconvenience this has caused.
5. There is another known issue with the B0086: Supplemental Staff Estimated Assignment End Date report under the PA: Temporary Employees folder. After initial rendering of the report, when you click on the refresh icon to go back to the variable entry screen, the prompt box will display. If you click on the Organizational Unit, and attempt to refresh the values, you will get an error that there is “No Variable found with identifier ‘ZHMMM_ORGUNIT’”. This same error will display if you attempt to search for values on any of the other prompts:



The BI team is working on a solution to this problem. You can work around this error by cancelling out of the prompt screen to go back to the report rendering. Click on refresh from within the report, and everything works normally again on the prompt screen.