

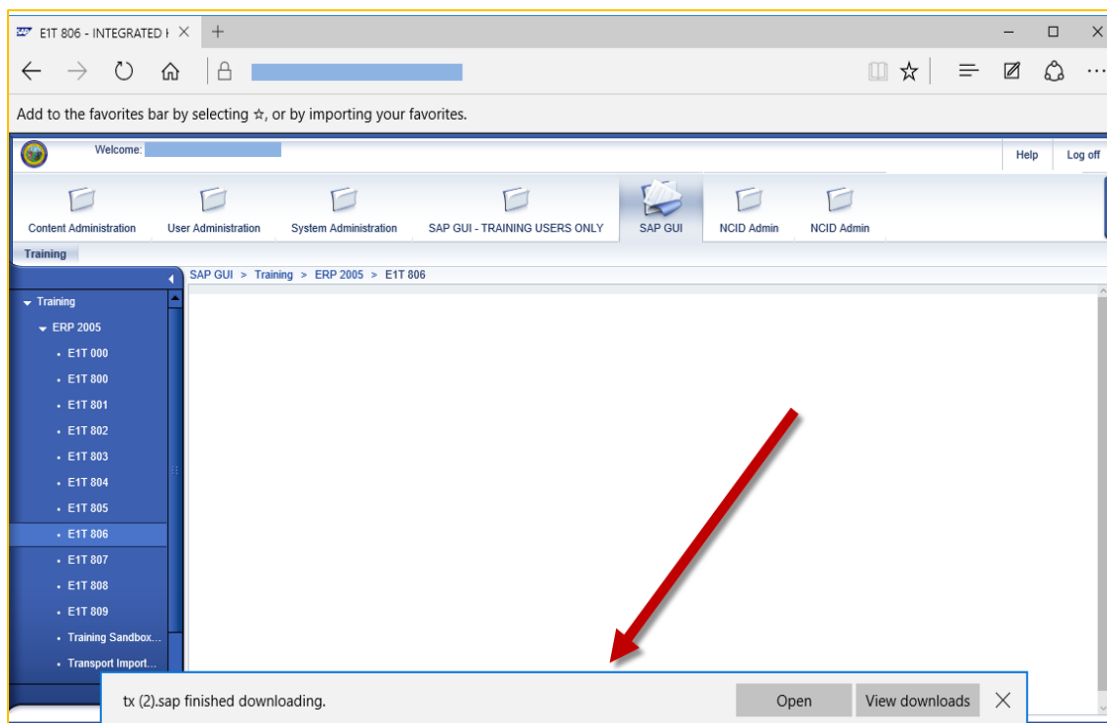
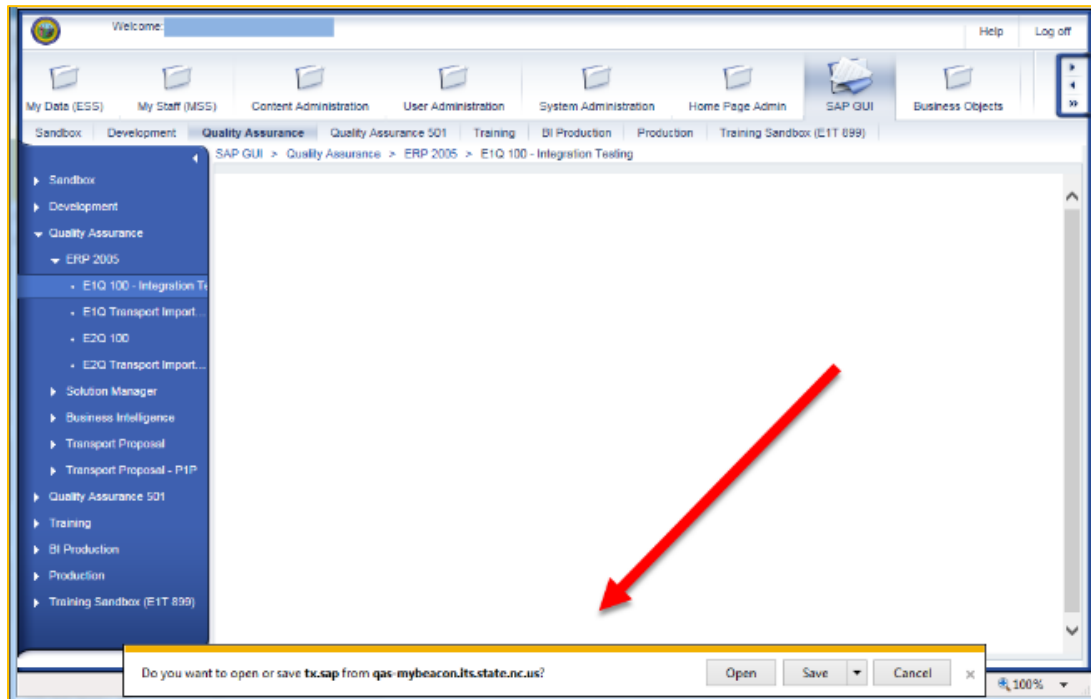


INTEGRATED HR-PAYROLL SYSTEM

HR | PAYROLL | BENEFITS | TRAINING | TIME

State-Owned PC Requirements

NOTE: The browser settings shown in this document do not prevent the security banner pop-up message from displaying at the bottom of the browser window when launching a SAPGUI client from the browser. End-users will need to click the *Open* button on the prompt to proceed.





DESKTOP PC MINIMAL REQUIREMENTS

Hardware

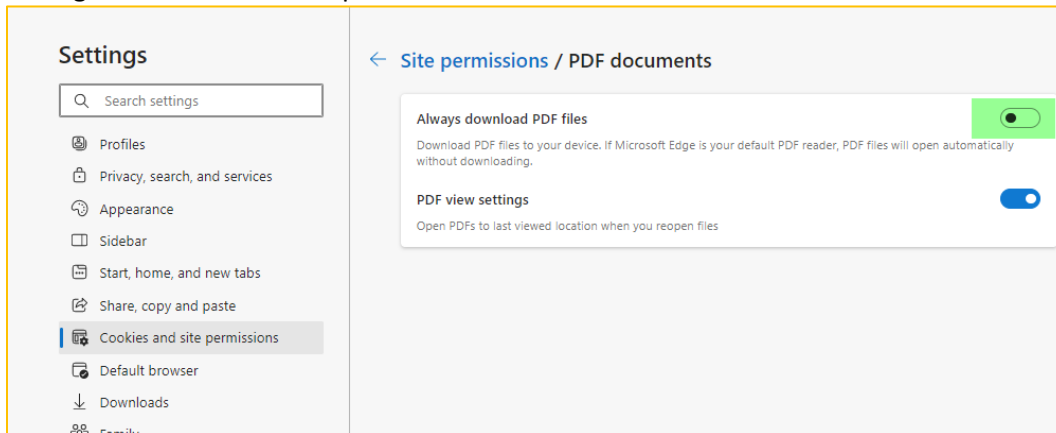
- **Portal:** CPU: 1+ GHz, RAM: 1GB, HD: 1GB
- **GUI (Windows 10):** CPU: 1+ GHZ, RAM: 1GB, HD: *(independent of SAP GUI release)*
- **Reporting Expert:** Portal+GUI+MS Office Products

Software

- **Operating Systems:** Windows 10
- **Acrobat Reader:** X, XI, DC
- **Browsers:**
 - Fiori:**
 - **Windows** – Microsoft Edge (Chromium)
 - **Android** – Google Chrome
 - **IOS** – Safari
 - Portal:**
 - **Windows** – Microsoft Edge (Chromium)
- **SAP WIN GUI:** 770 Patch 3
- **Excel (MS Office):** 2003 and above
- **Java Runtime Environment (JRE):** 1.5 and above

Microsoft Edge – PDF Setting:

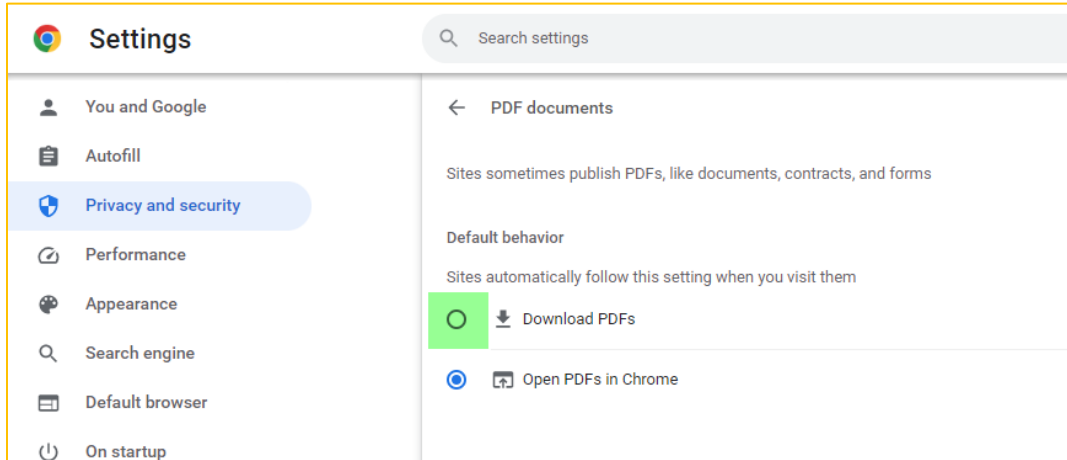
Settings → Cookies and site permissions → PDF Documents





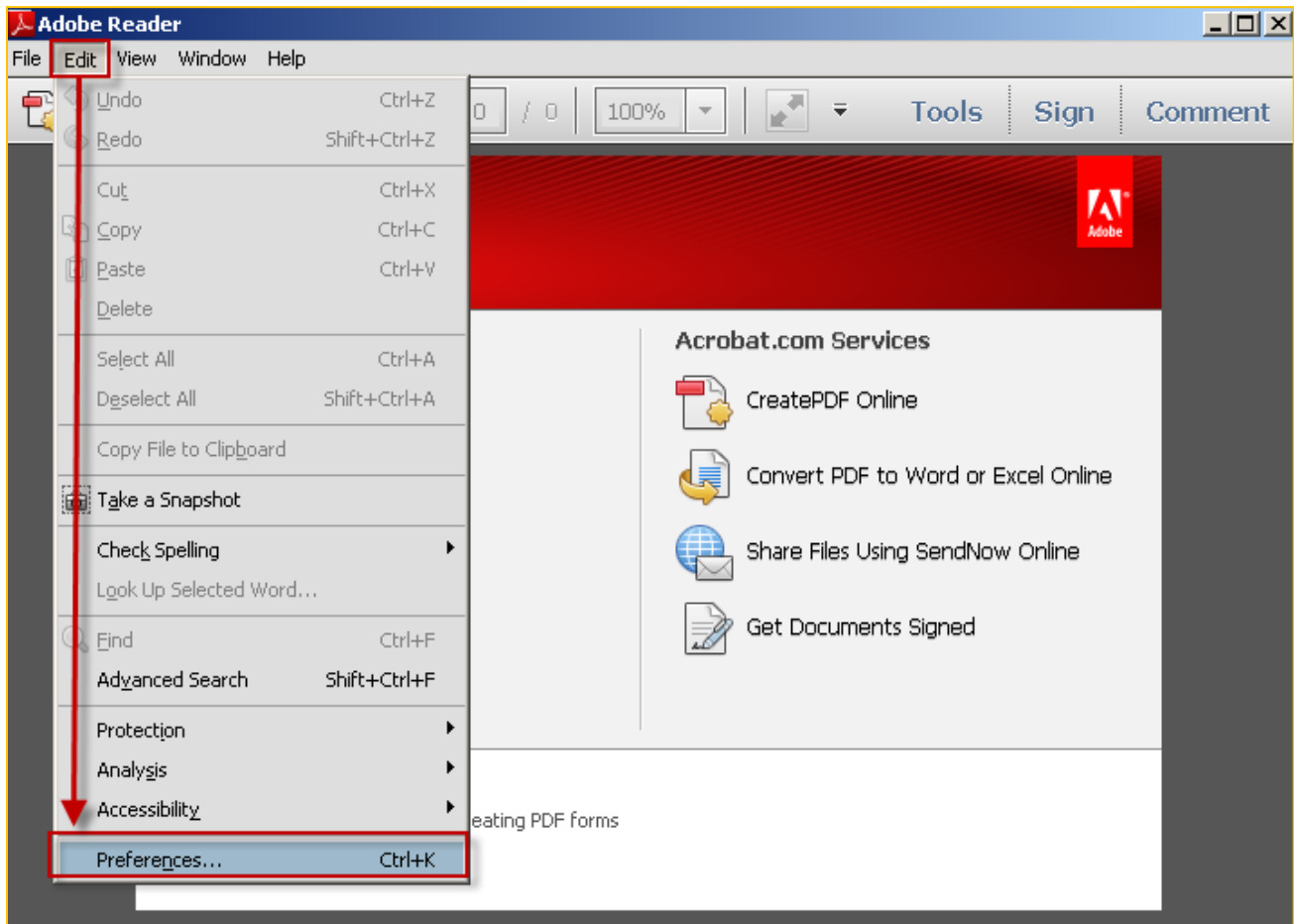
Google Chrome – PDF Setting:

Settings → Privacy & security → Site Settings → Content → Additional content and settings → PDF Documents



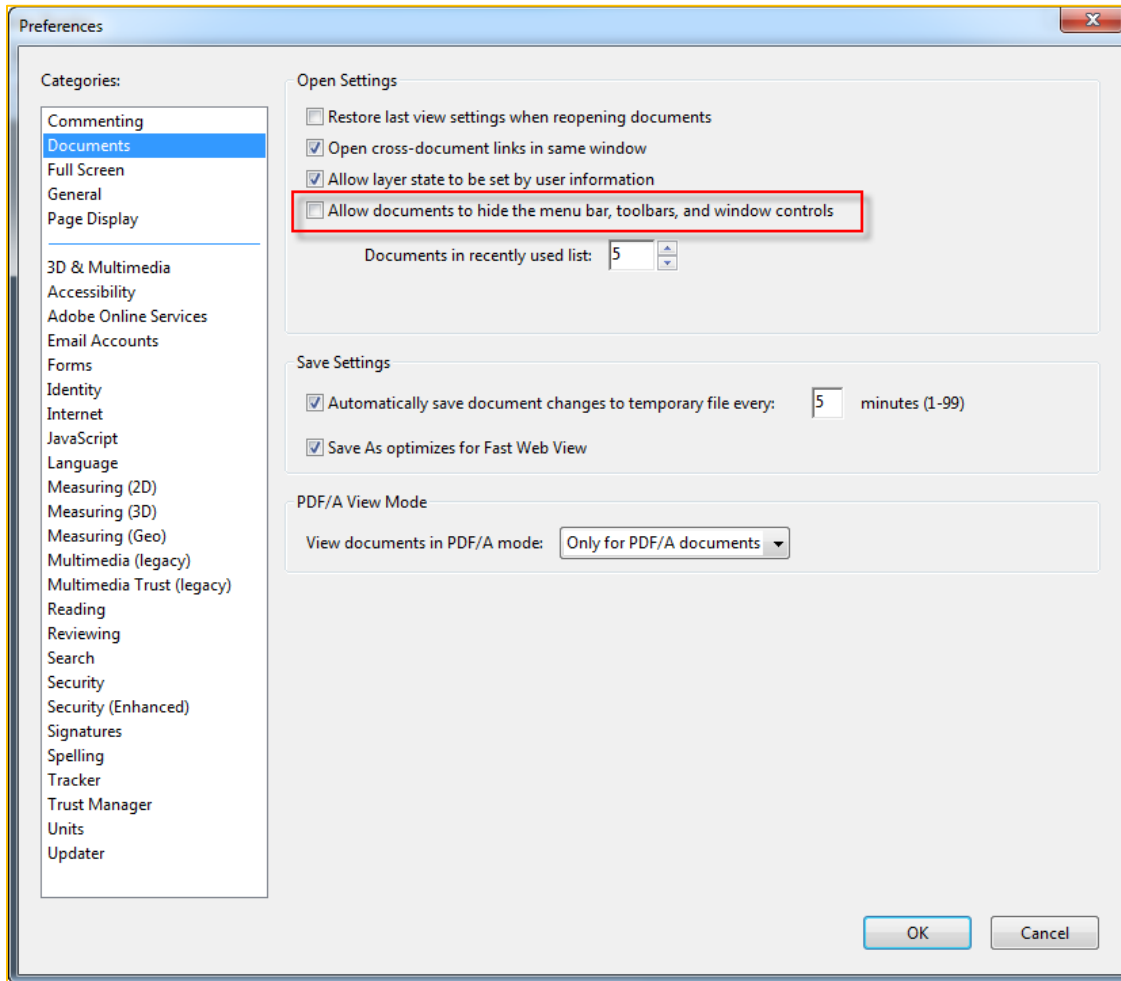
Adobe settings:

1. Close all browsers
2. Open the Adobe Reader DC (Start → All Programs → Adobe Reader)
3. Click on **Edit** → **Preferences** → **Documents**



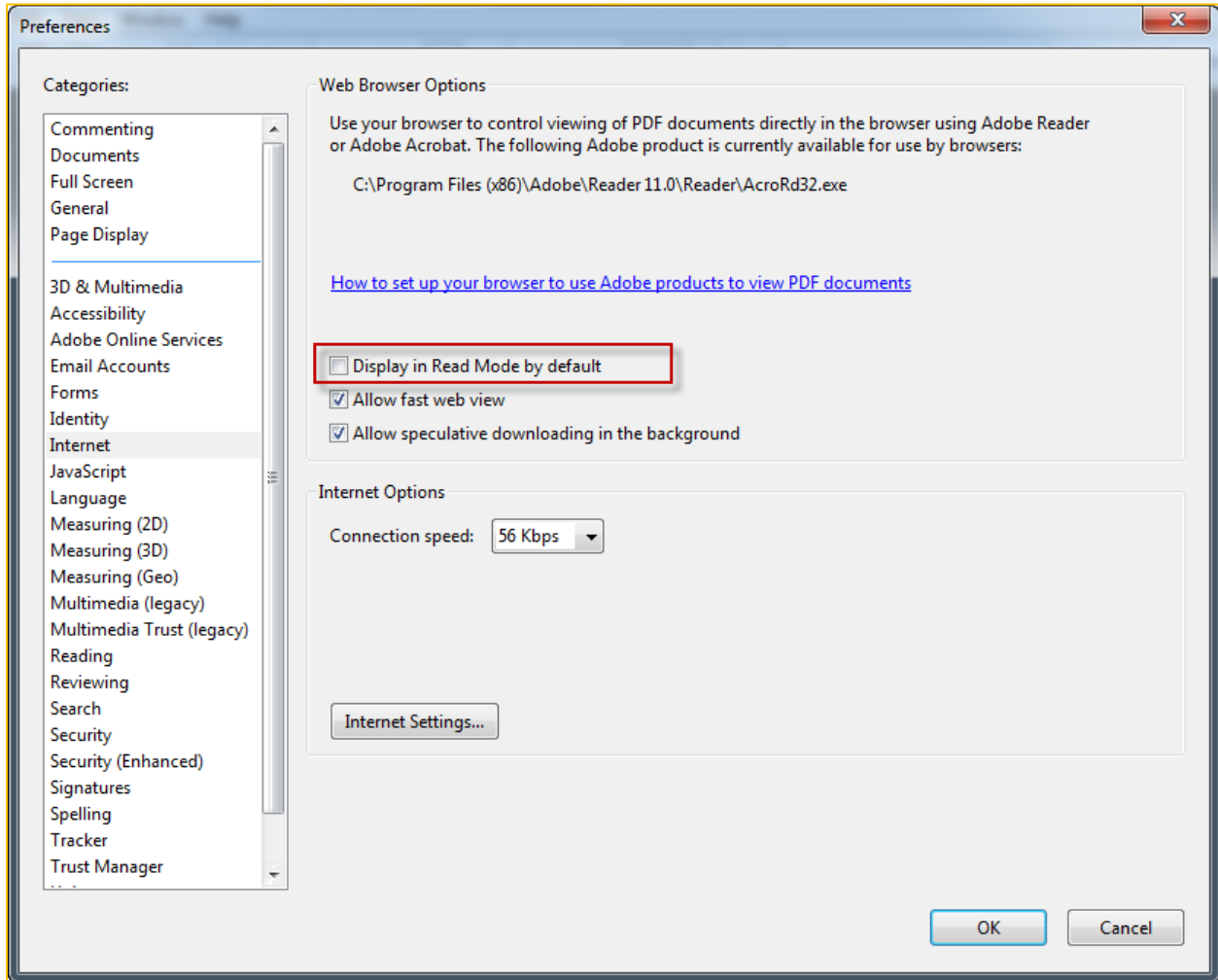


4. Uncheck the “Allow documents to hide the menu bar, toolbars, and window controls” checkbox:





5. Click on the “**Internet**” option and uncheck the following box:



6. Click **OK** when done. Open a browser, login to the Integrated HR – Payroll System (formerly BEACON portal) and verify the pay statement displays correctly.